

Key Features

- The 102 x 50mm framing system is designed for thick glass and features a 20.50mm wide x 22.50mm deep glazing pocket, engineered to accommodate substantial glass configurations. This design allows for improved structural capacity, enhanced acoustic performance, and greater design flexibility for modern commercial façades and shopfront applications.
- The system is designed to integrate seamlessly with the matching Series 52 heavy duty 50mm door, supporting thick glazing through the use of deep (19mm) braced snap-on beads. The increased glass bite enhances structural security and wind resistance while maintaining a clean, architectural aesthetic.
- When configured with appropriate mullions and sealing methods, Series 420 achieves water resistance to AS/NZS 4284 of 600Pa static and up to 1200Pa cyclic. This makes it ideal for exposed commercial environments that require proven façade performance and reliable weather integrity.
- The system accepts awning sashes from Series 466/476 and sliding sashes from Series 472 via dedicated adaptors, enabling cohesive façade solutions. Multiple midrail depths (125mm and 200mm) provide flexibility in visual design while maintaining the consistent 20.50mm glazing pocket.

GENERAL

Max Panel Height*

Various

Max Panel Width*

Various

Max Glass Thickness

15.50mm **Single Glazed**

Frame Depth

102mm

ENERGY

UW Range

4.2-6.1

SHGC Range

0.26-0.74

WEATHER

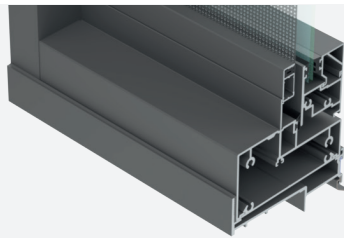
Maximum Water

600 Pa.

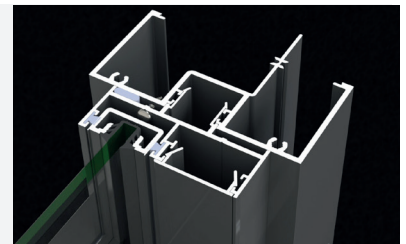
ACOUSTICS

Rw 37 10.5mm Vlam Hush

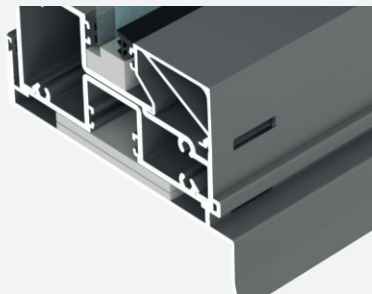
Rw 34 10.38mm Vlam



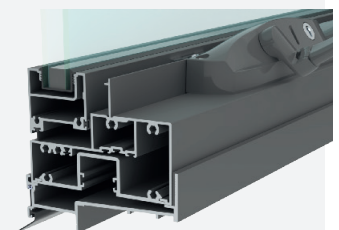
Awning sashes, head, sill and transom from Series 466 go straight into Series 420 with a dedicated sash jamb stop.



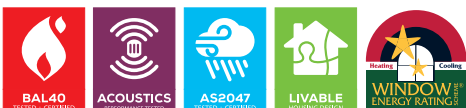
Sliding sashes, head, sill and transom from Series 472 go straight into Series 420 with a dedicated jamb adaptor that snaps into Series 420 jambs.



Braced fixed framing bead designed to stay in place under high negative wind loads.



Awning sashes, head, sill and transom from Series 476 go straight into Series 420 with a dedicated sash jamb stop.



*Dimensions subject to individual site conditions.