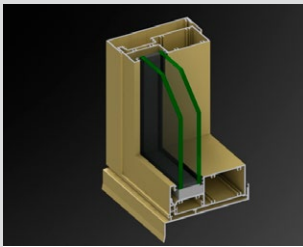
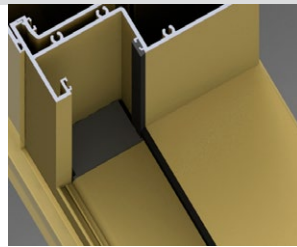


### KEY FEATURES

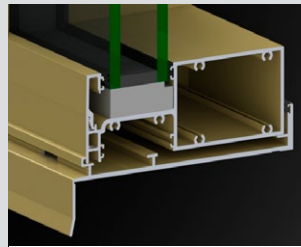
- FrontGLAZE™ Double Glazed shopfront framing system.
- Basic 150 x 60mm framing system with a large variety of accessories including sub-frames, COC transom, matching doors that will also accept up to 36mm double glazing and a variety of door thresholds.
- Glazing pocket designed to accept up to 44mm insulating glass units (IGU's) with 12mm bite plus another 8mm to cover glass production and installation tolerances.
- Pocket reducers for thinner IGU glazing options.
- Compatible with a large range of other Elevate™ framing systems, including sliding doors.
- Snap together and interlocking expansion mullions.
- 50mm Thick door designed to accept double glazing and a large variety on industry standard hardware.



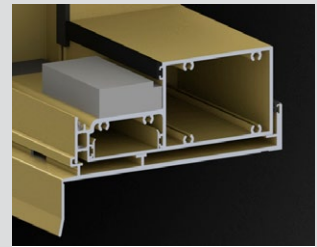
Alternative fully beaded option available on individual fixed lite windows



Custom pocket filler designed to close off recesses for a tidy appearance



Designed to accept up to 44mm IGUs with 12mm bite. Pocket reducers can be used to reduce the glazing pocket dimensions so thinner IGUs can be accommodated



Custom Glazing blocks support thick IGUs

#### GENERAL

**Max Panel Height**  
Various

**Max Panel Width**  
Various

**Max Glass Thickness**  
44mm

**Frame Depth**  
150mm

#### ENERGY

**UW Range**  
2.2-3.1

**SHGC Range**  
0.18-0.60

#### WEATHER

**Maximum Water**  
450Pa.

#### ACOUSTICS

This product has not been acoustics tested.

