

## Key Features

- Architectural-grade performance delivered through precision-engineered 150 mm awning window systems with refined minimalist aesthetics.
- Flexible glazing capability with wrap-around sashes supporting 18–20 mm IGUs or 4–10.38 mm single glazing, plus optional beaded sashes for IGUs up to 25 mm.
- Integrated hood hinge design protects against water ingress and enables fast sash removal and reinstallation for maintenance.
- Performance side latches boost negative pressure resistance by up to 100% for demanding environments.
- Automation-ready with concealed electric winder options for seamless smart-building integration.
- Advanced hardware systems including heavy-duty single or dual chain winders for accurate, reliable operation.
- Enhanced thermal and acoustic potential through broad glass compatibility, supporting high-performance project specifications.
- Clean, consistent sightlines aligned with UltraEDGE™ system geometry for cohesive architectural detailing.

### GENERAL

#### Max Sash Height\*

2324mm

#### Max Sash Width\*

2290mm

#### Max Glass Thickness

10.38mm **Single Glazed** – 25mm **Double Glazed**  
with Beaded Sash

#### Frame Depth

150mm

### ENERGY

#### UW Range

xx-xx TBC

#### SHGC Range

xx-xx TBC

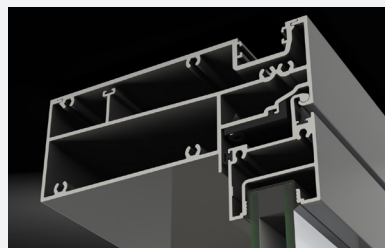
### WEATHER

#### Maximum Water

600 Pa.

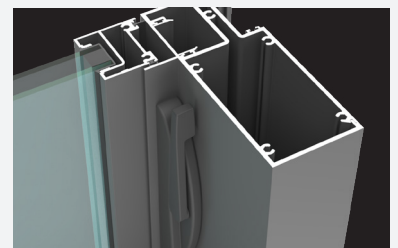
### ACOUSTICS

TBA



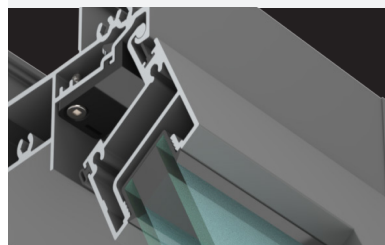
#### Hook hinge to the head

A concealed hook hinge locks the sash securely into the head, providing stable support and smooth operation while preventing accidental lift-out.



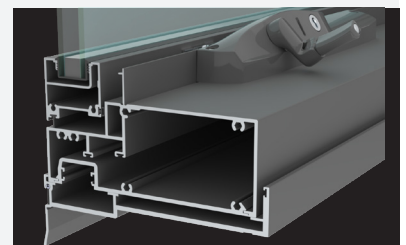
#### Jamb latch

The jamb latch positively engages the sash against the frame, improving sealing, security, controlled operation and high resistance in negative wind loads.



#### Sash retainer (safety retainer)

The sash retainer prevents the sash from disengaging under load or misuse, ensuring safe operation.



#### Hardware options available

Multiple chain winder options including manual, twin and concealed electric allow controlled, secure sash operation and wide compatibility across awning configurations.

\*Dimensions subject to individual site conditions.

