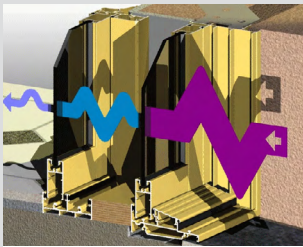
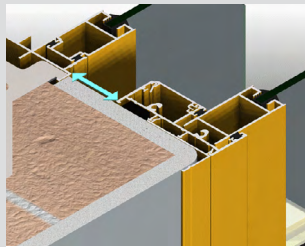


### KEY FEATURES

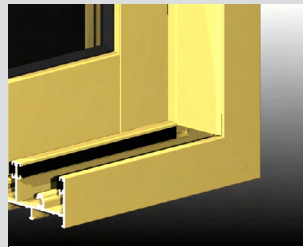
- This product has been specially designed to reduce noise infiltration through sliding door openings. The SoundOUT™ sliding door system is designed to be installed behind existing or new sliding doors. Product has been tested at the National Acoustic Laboratories, Chatswood NSW.
- The panels are double weatherpile sealed on all sides for maximum soundproofing.
- Slimline meeting stiles are less obtrusive and allow maximum vision. The meeting stiles on SoundOUT™ will align directly behind Series 541 or 542 main door meeting stiles.
- All sashes on the SoundOUT™ system can be opened to allow cleaning of the inner face of the outer door panels.
- Panels run on the same large diameter heavy duty wheels used on Series 541. Double bogey wheels can also be used on SoundOUT™. These wheels are height adjustable to allow panels to be squared up in the frame.
- Sashes will accept glass up to 7.52mm thick with full wraparound PVC glazing channel or if preferred SoundOUT™ sashes can be double glazed.



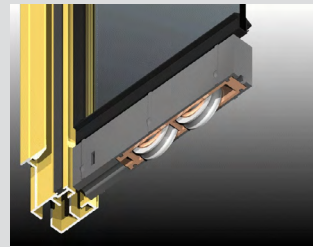
For serious sound reduction, use Vantage SoundOUT™. In some cases, the Vantage SoundOUT™ window may perform better than the wall it is being built into.



Installing this product will create a thermally broken double glazed door that will significantly reduce heating and cooling costs.



The custom mitred SoundOUT™ frame is designed specifically for this product. Unwanted recesses are closed off with flat fillers as shown above.



Vantage wheels have been custom designed to fit snugly into the door bottom rail. Nothing slides as smooth as a Vantage sliding door. Double bogey wheels are used on heavy doors, as show above.

#### GENERAL

**Max Panel Height**  
2400mm

**Max Panel Width**  
1200mm

**Max Glass Thickness**  
20mm

**Frame Depth**  
74mm

#### ACOUSTICS

The numbers below cover Series 533 doors only.

**6.38mm Lam**  
Rw30 (I;-I)

**7.52mm Lam**  
Rw31 (I;-I)

#### ACOUSTICS

SoundOUT™ Sliding Door with primary 541 Sliding Door (4mm Tgh) and 100mm air gap

**6.38mm Lam**  
Rw42 (-I;-6)

#### ACOUSTICS

SoundOUT™ Sliding Door with primary 541 Sliding Door (4mm Tgh) and 100mm air gap

**4mm Tgh**  
Rw41 (-2;-7)

