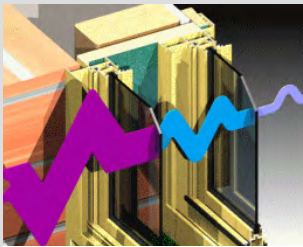
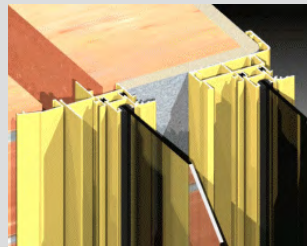


KEY FEATURES

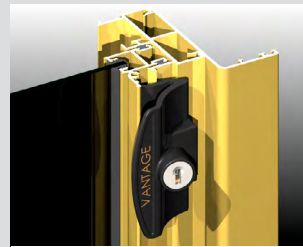
- The Series 531 SoundOUT™ Sliding Window has been specially designed to reduce noise infiltration through window openings. The SoundOUT™ sliding sash system is designed to be installed behind existing or new windows, usually on the reveals within the wall dimension. Product has been tested at the National Acoustic Laboratories, Chatswood NSW.
- Sashes are double sealed at all joints for maximum soundproofing.
- Several locks to choose from including centre multi-point locking.
- All sashes on the SoundOUT™ system can be opened to allow cleaning of the inner face of the outer window.
- Sashes run on large diameter heavy duty wheels, with nylon tyred ball bearing wheels used on the heavier sashes. These wheels are height adjustable to allow sashes to be squared up in the frame.
- Sashes will accept glass up to 7.52mm thick with full wrap around PVC glazing channel or if preferred SoundOUT™ sashes can be double glazed.



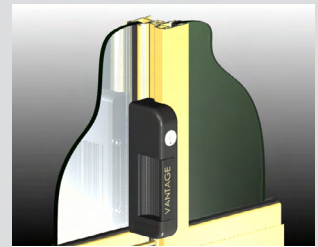
For serious sound reduction, use Vantage SoundOUT™. In some cases, the Vantage SoundOUT™ window may perform better than the wall it is being built into.



The best results are achieved by fitting the SoundOUT™ sliding windows behind a well sealed conventional window with a 75mm to 100mm gap between windows.



The standard latch/lock on the 531 secures the panel behind the external opening panel to the jamb. This latch can be keyed to match other Vantage windows and can be colour matched to the window framing.



SoundOUT™ sashes can be fitted with a custom centre lock. This lock throws an aluminium rod into a head keeper for maximum security.

GENERAL

Max Panel Height
1500mm

Max Panel Width
950mm

Max Glass Thickness
6.76mm (10.38mm inc adaptor)

Frame Depth
55mm

ACOUSTICS

SoundOUT™ Sliding Window with primary 504 Awning window (3mm float) and 100mm air gap

6.38mm Lam
STC38

ACOUSTICS

SoundOUT™ Sliding Window with primary 504 Sliding window (3mm float) and 100mm air gap

7.52mm Lam
Rw41 (-2; -8)

ACOUSTICS

SoundOUT™ Sliding Window with primary 504 Sliding window (3mm float) and 100mm air gap

6.38mm Lam
Rw41 (-2; -7)

